



## In The Spotlight

- A BI Review of current Business Intelligence practices is the cornerstone of a new Business Intelligence approach to best serve Business requirements.
- Oracle Data Integrator 10.1.3.5. is available since end 2008, what is new ?
- Using ODI to automate Data and MetaData exchange with Hyperion
- Technology Agnostic ? Is it something you

## Getting a better picture of the BI Practice within your Organization?

Small, medium or large enterprises develop Business Intelligence practices to support their operational, tactical and strategic processes. The tools once put in place might today no longer be strong enough to respond to your needs because your organization has increased in size and more employees need to share a consistent view of the Business.

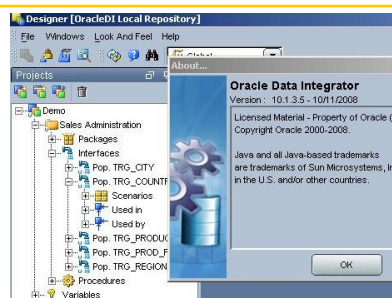
You feel a new impulse has to be provided and new marks have to be defined to support your company's progression.

A quick BI Audit of your organization would be the ideal starting point and cornerstone of this next move forward providing you with better insight on your BI Strengths, Weaknesses, Opportunities and Threats or Risks.

## Why don't you initiate TODAY a BI Audit or Review of your Organization?

### Oracle DI 10.1.3.5. is available since end 2008 — What is new ?

Oracle is delivering upon the announced product roadmap of ODI (previously Sunopsis). In the latest release, already a couple of months ago, some new functions and KM's (*Knowledge Modules*) are made available that extend the reach and scope of the ODI out-of-the-box applicability such as two (2) KM's to [interact with the Oracle E-Business Suite](#), enabling developers to reverse engineer Metadata (*EBusiness Suite data structures*), extract and load Data; KM's for Oracle OLAP, Oracle Siebel CRM, ... The Hyperion KM's are certified for Hyperion 11.1.1.



Further, developers now have the ability to view and compare two different versions of an ODI object enabling them to more easily locate differences and work progress. Six new tools are now available for securely transferring files under SFTP or SCP protocols. Enhancements have been made on the Scheduling ,Security and Export functions.

### Using ODI to automate Data and MetaData exchange with Hyperion

Some months ago, F.IT-C got the opportunity to extend its ODI expertise using the - at that time - new KM's for Hyperion, actually a couple of KM's since the Hyperion world encompasses the Essbase back-end for Planning as well as the Planning Application and the Financial Management (H.FM) Application and all of them dealing with Data and Metadata (*in Hyperion language: Dimensions & Members*) and interaction means reading/extracting data/metadata as well as loading data/metadata. The projects that got to implementation using the ODI KM's were all Planning related (higher data volumes, different key configuration (different dimensions and dimensions numbers)). For H.FM where low data volumes are manipulated and the key structure is pre-defined, the interaction ended up manipulating/transforming data read from flat file and restituted in flat file.

```
SELECT NON EMPTY
{{Total}.[Base]} ON COLUMNS,
MemberRange([N_221100],[N_221310], LEVEL)
ON ROWS,
{{[Currency].[Local_Curr]} ON AXIS(2),
{{[Entity].[N_RIPBC1]} ON AXIS(3),
MemberRange({&ODI_BegPer},{P12}) ON AXIS(4),
{{[Year].[&ODI_BegYr]} ON AXIS(5),
{{[Scenario].[&ODI_Scen]} ON AXIS(6),
{{[RawMaterial].levels(0).members } ON AXIS(7),
{{[EndProduct].[NO_EP]} ON AXIS(8),
{{[CustomerSupplier].[NO_CS]} ON AXIS(9)
FROM XXXXXX.Plan1 WHERE [Version].[WIP]
```

Example of ODI generated MDX query

The H.FM users could then leveraged the control functions built-in the interactive load process making it possible to make corrections "on the fly".

The data extraction from Essbase made use of MDX queries (though MaxL scripts is also possible) and the data load happened to be very fast when no error was to be found in the loaded data, what we got to learn from trials and errors.

The processes reading Data from Essbase were also built to support concurrent executions especially to support concurrent budget and planning preparation and synchronization to H.FM.

### Technology Agnostic ? Is it something you take into account ?

In the business application arena, one happens to compare 'All-in-One' and 'Best-of-Breed' approaches. In the BI / DI tool arena one would rather compare 'Proprietary' and 'Agnostic' approaches. With a Proprietary solution, you usually engage yourself and your organization with a vendor. Ability to switch over to other available technologies usually imply leaving your proprietary investments behind. With an 'Agnostic' solution, you will look at preserving as much as possible your ability to mix technologies and caring for lower Cost of Ownership in the long term, 'Best-of-Breed' responses to technology opportunities, reusability, ...

How 'Agnostic' do you want to be ? Could be another criterium to consider !

To remove your name from our mailing list, e-mail us at [remove@fitconsult.be](mailto:remove@fitconsult.be) .

Questions or comments? E-mail us at [info@fitconsult.be](mailto:info@fitconsult.be) or call +32 56 205887 Visit us at [www.fitconsult.be](http://www.fitconsult.be)